

# Mipox Probe Card Cleaning Sheet

Mipox Corporation

Electronics Unit Sales Division Sales First Section

## Authorized Distributor in India



**G P NET INDIA PVT. LTD.**

1511, "Brahmi", 3rd Floor, 9th Cross, MCECHS Layout, Phase 2,  
Dr S R K Nagar, 2nd Stage. Jakkur, Bangalore – 560064, INDIA

TEL : +91-80-68957171      Email : sales@gpnet.co.in

Website : www.gpnet.co.in

ES-23-147

Mipox Confidential

Description	Sheet Type	Based Material	Abrasive material	Abrasive Size (μm)	Sheet Color	Adhesive
WA4000-75 TEZ-G	PET Type	PET	Aluminum oxide	3	YELLOW	A Type : ~80℃ D Type : ~120℃
WA6000-75 TEZ-A			Aluminum oxide	2	WHITE	
WA8000-75 TEZ-B			Aluminum oxide	1	L.PINK	
GC6000-75 FEY-B			Silicon carbide	2	GRAY	
GC4000-PF3 FEY-A	PF3 Type	Formed Polyurethane	Silicon carbide	3	GRAY	H Type : ~110℃ D Type : ~120℃
GC6000-PF3 FEY-A			Silicon carbide	2	GRAY	
GC8000-PF3 FEY-A			Silicon carbide	1	BROWN	
SI10000-PF3 FEY-A			Silicon dioxide	0.5	ORANGE	
WA4000-SWE FWX	SWE Type	Formed Polyurethane	Aluminum oxide	3	YELLOW	A Type : ~80℃ D Type : ~120℃
WA6000-SWE FWX			Aluminum oxide	2	GREEN	
WA8000-SWE FWX			Aluminum oxide	1	PINK	
SI10000-SWE FWX			Silicon dioxide	0.5	ORANGE	
GC4000-BC3 FEZ-C	BC3 Type	PET + Formed Polyurephin	Silicon carbide	3	GRAY	Adhesive tape ~80℃
GC6000-BC3 FEY-B			Silicon carbide	2	GRAY	
GC8000-BC3 FEY-A			Silicon carbide	1	GRAY	
GC10000-BC3 FEY-A			Silicon carbide	0.5	GRAY	

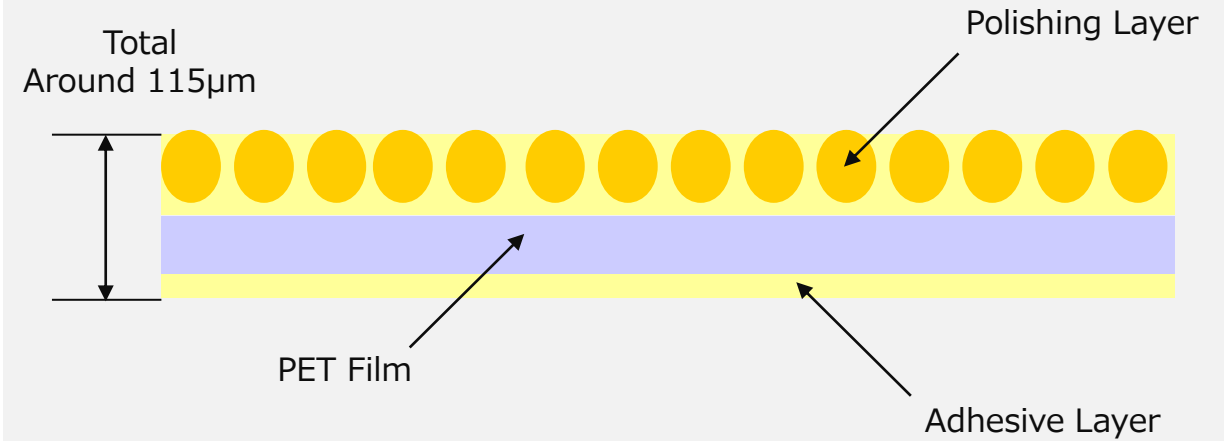
## Lineup

- WA4000-75 TEZ-G
- WA6000-75 TEZ-A
- WA8000-75 TEZ-B
- GC6000-75 FEY-B

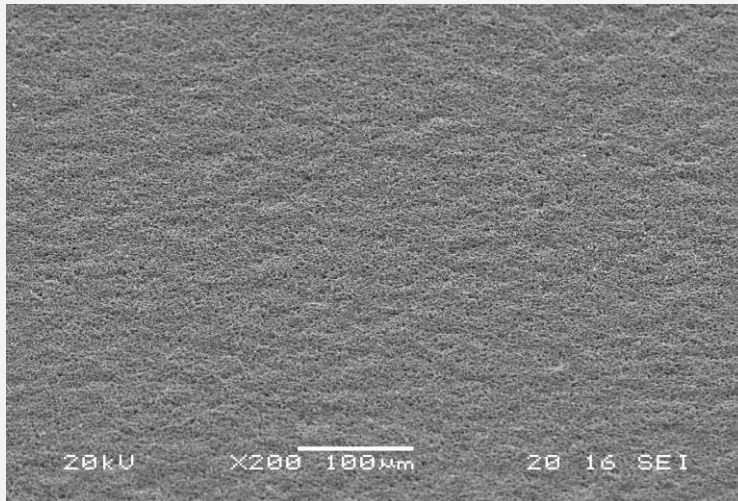
## Features

- Construction: Lapping Film and Adhesive layer
- It is recommended for Cantilever Type and Flat Pins
- The construction is suitable to remove rigid debris.

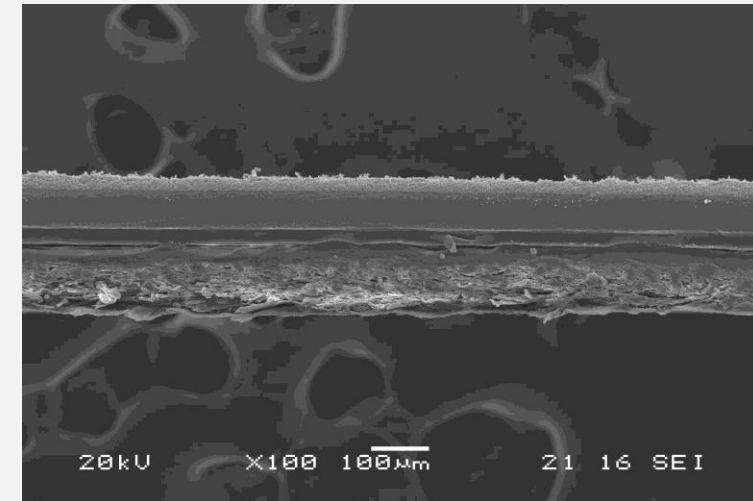
## Structure



## Surface SEM Image



## Cross-section SEM Image



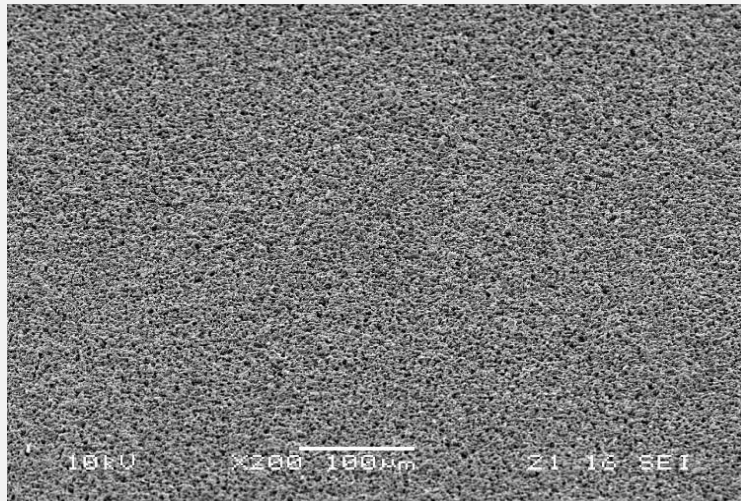
## Lineup

- GC4000-PF3 FEY-A
- GC6000-PF3 FEY-A
- GC8000-PF3 FEY-A
- SI10000-PF3 FEY-A

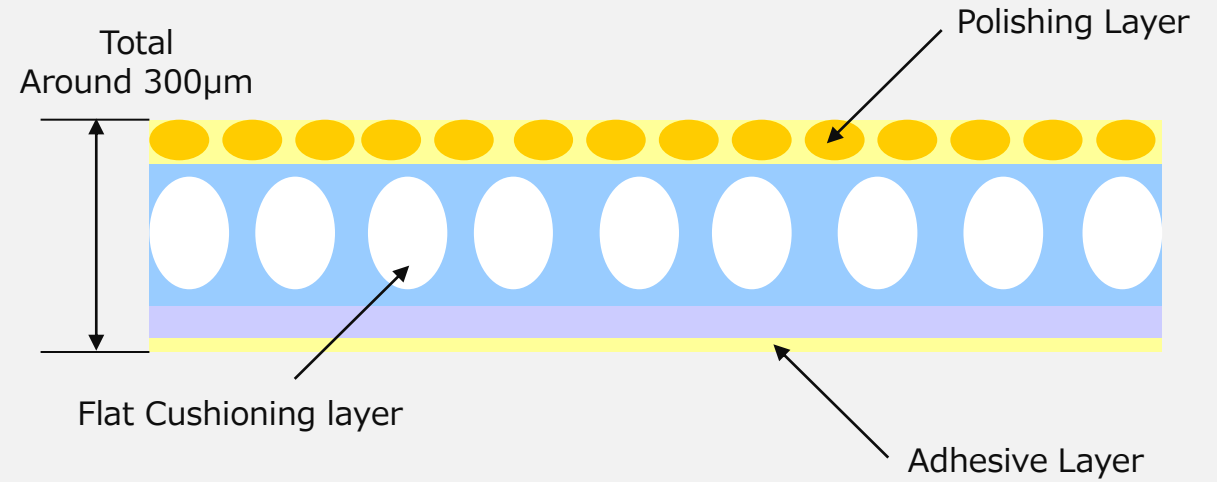
## Features

- Construction: Polishing layer with Flat Cushioning layer
- Low damage and highly efficient cleaning
- Available for many kinds of cards and pin types

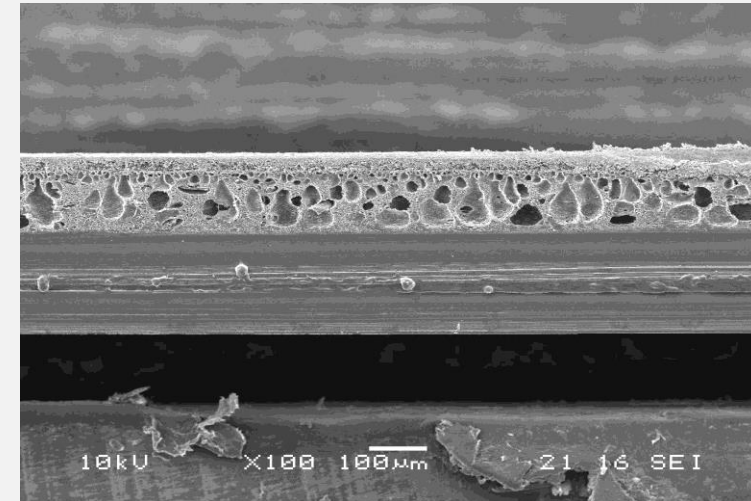
## Surface SEM Image



## Structure



## Cross-section SEM Image



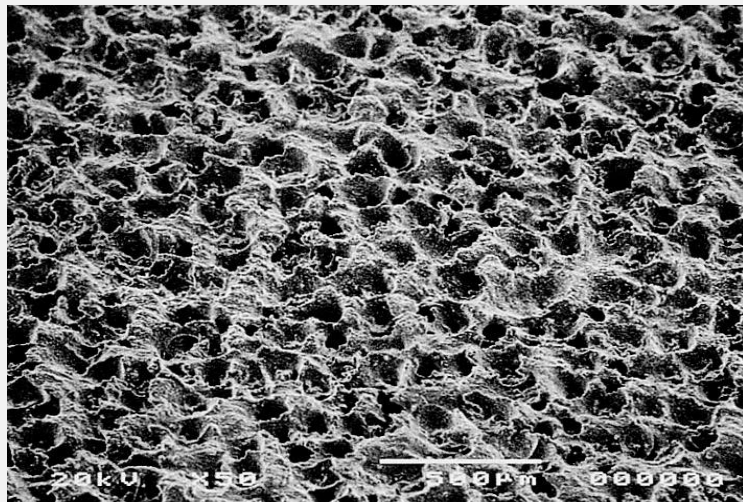
## Lineup

- WA4000-SWE FWX
- WA6000-SWE FWX
- WA8000-SWE FWX
- SI10000-SWE FWX

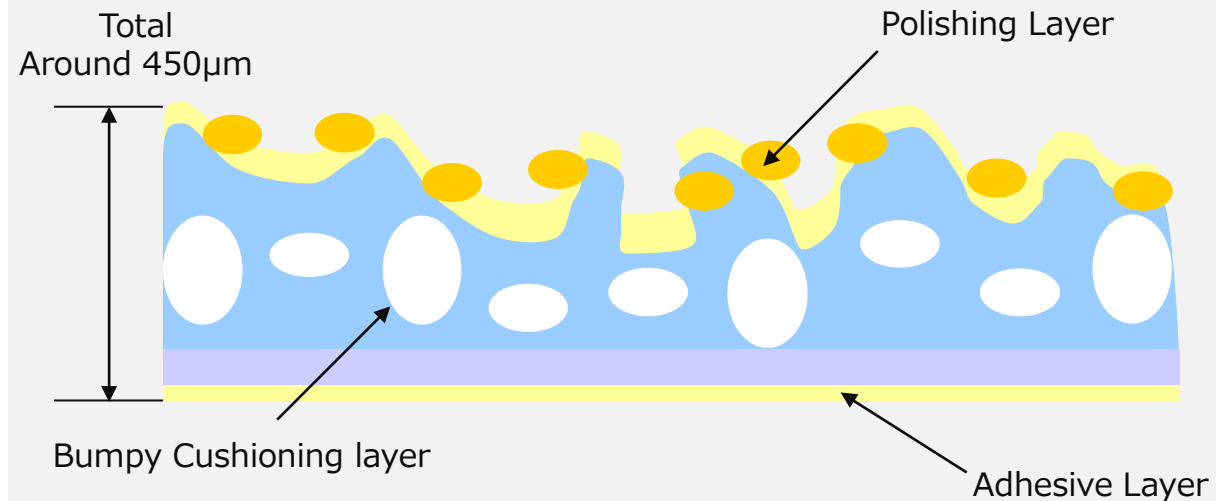
## Features

- Construction: Polishing layer with Bumpy Cushioning layer
- Low damage and highly efficient cleaning
- It is recommended for Round and Pogo Pins

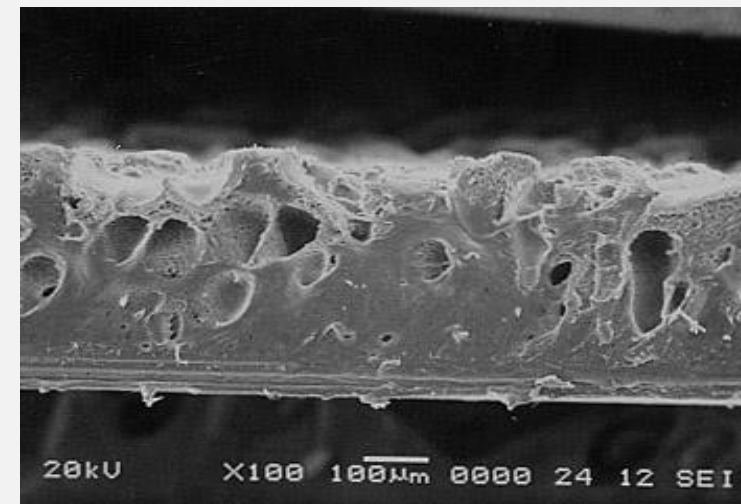
## Surface SEM Image



## Structure



## Cross-section SEM Image



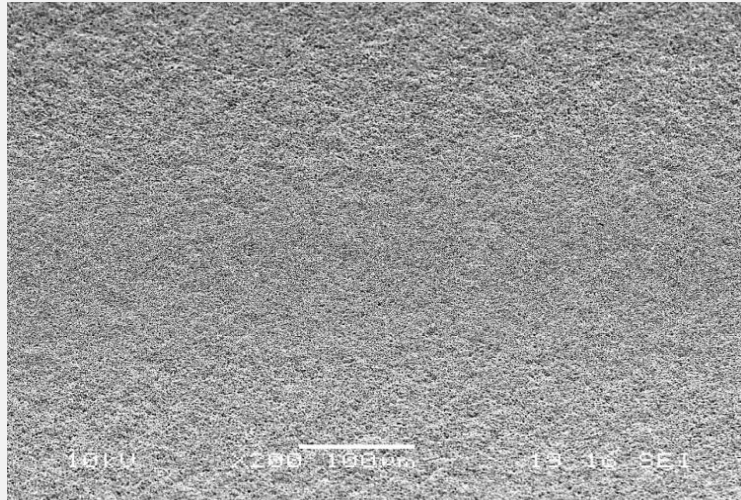
## Lineup

- GC4000-BC3 FEZ-C
- GC6000-BC3 FEY-B
- GC8000-BC3 FEY-A
- GC10000-BC3 FEY-A

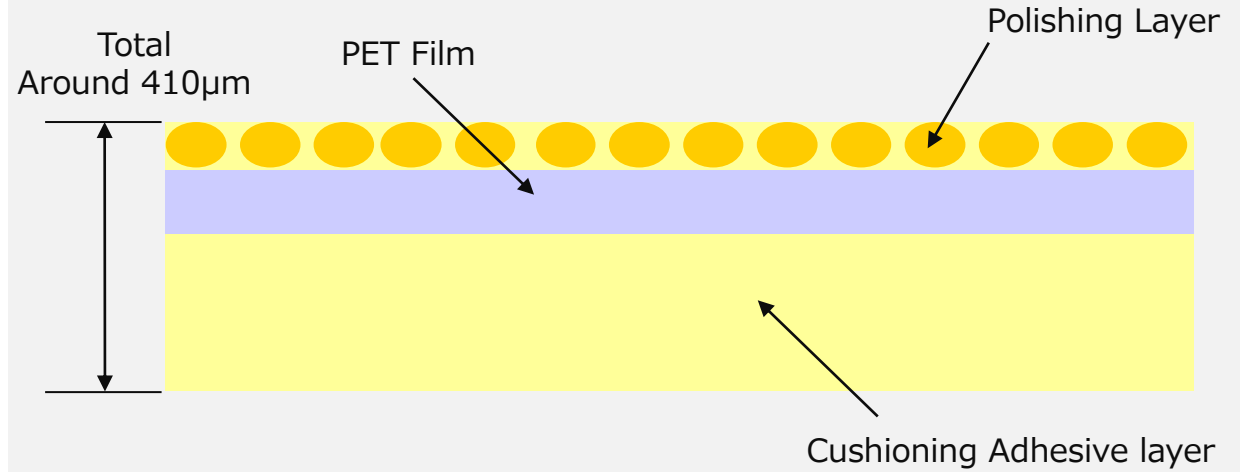
## Features

- Construction: Lapping Film and Cushioning Adhesive layer
- Low damage and highly efficient cleaning
- It is recommended for Cantilever Type and Round Pins

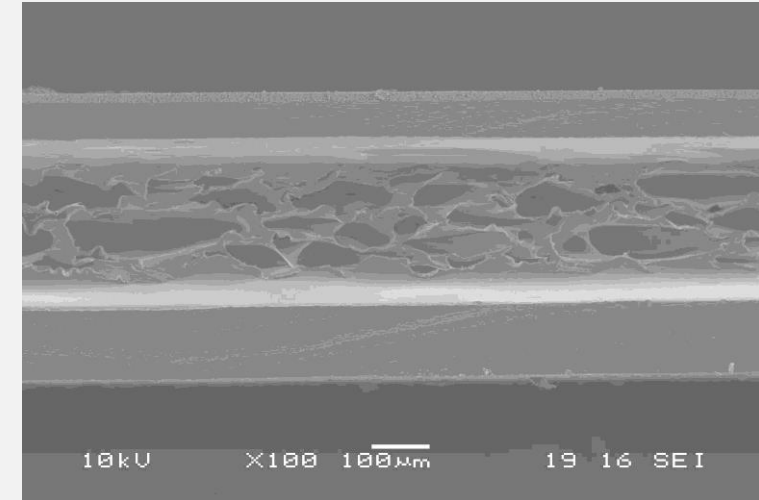
## Surface SEM Image



## Structure



## Cross-section SEM Image



Sheet Type	Cleaning Ability		Heat Resistance (Max°C)	Over Drive (Reference)	Wear for Pin	Features	Recommended types of pin	Recommended Probe Cards
	Top	Side						
PET	◎	△	A type: 80 D type: 120	30µm	High	<ul style="list-style-type: none"> <li>•Construction: Lapping Film and Adhesive layer</li> <li>•Recommended for Cantilever Type and Flat Pins</li> <li>•Suitable to remove rigid debris.</li> </ul>		Cantilever Flat
PF3	○	○	H type: 110 D type: 120	30µm~ 50µm	Low	<ul style="list-style-type: none"> <li>•Construction: Polishing layer with Flat Cushioning layer</li> <li>•Low damage and highly efficient cleaning</li> <li>•Available for many kinds of cards and pin types</li> </ul>		Cantilever Round Needle MEMS
SWE	○	◎	A type: 80 D type: 120	50µm~ 80µm	Low	<ul style="list-style-type: none"> <li>•Construction: Polishing layer with Bumpy Cushioning layer</li> <li>•Low damage and highly efficient cleaning</li> <li>•Recommended for Round and Pogo Pins</li> </ul>		Pogo MEMS Other
BC3	○	△	Adhesive tape: 80	30µm~ 50µm	Low	<ul style="list-style-type: none"> <li>•Construction: Lapping Film and Cushioning Adhesive layer</li> <li>•Low damage and highly efficient cleaning</li> <li>•Recommended for Cantilever Type and Round Pins</li> </ul>		Cantilever Round

※Cleaning ability will be changed depends on the using conditions.

**Above information is just for reference.**

## Cleaning the top of probe pin

Before Cleaning



After Cleaning



## Using Condition

Prober	TOKYO Electron P-8
Over Drive	80 $\mu$ m
Contact	50 Times
Cleaning Sheet	GC8000-PF3 FEY-A